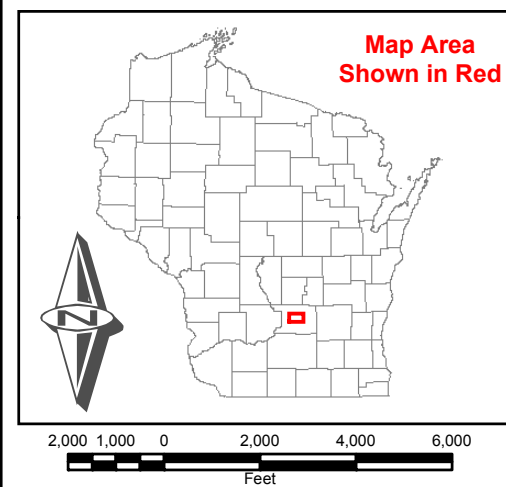
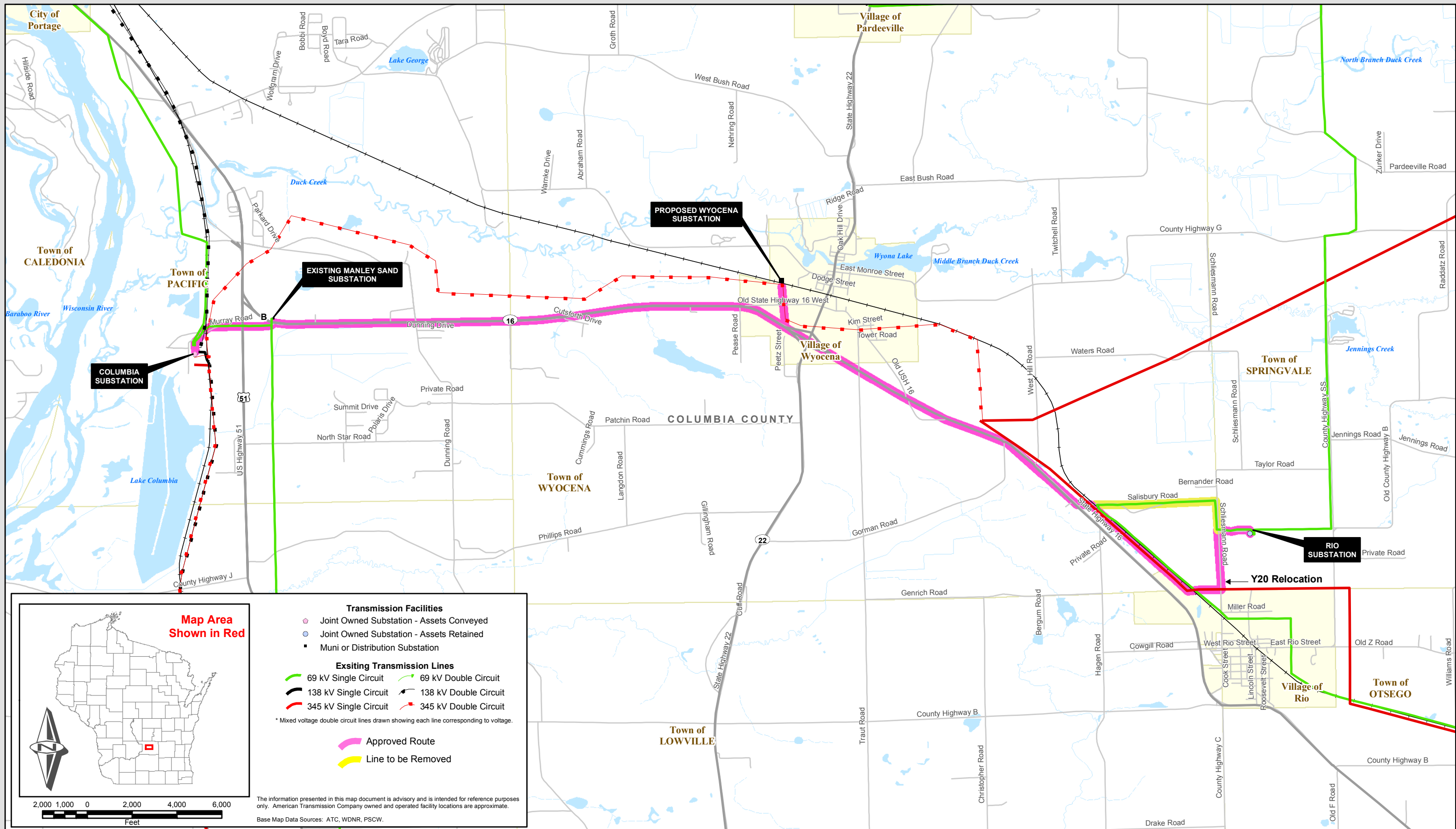


# APPROVED ROUTE

## Columbia - Wyocena - Rio 69 kV Line



**Transmission Facilities**

- Joint Owned Substation - Assets Conveyed
- Joint Owned Substation - Assets Retained
- Muni or Distribution Substation

**Existing Transmission Lines**

- 69 kV Single Circuit
- 69 kV Double Circuit
- 138 kV Single Circuit
- 138 kV Double Circuit
- 345 kV Single Circuit
- 345 kV Double Circuit

\* Mixed voltage double circuit lines drawn showing each line corresponding to voltage.

**Approved Route**

**Line to be Removed**

The information presented in this map document is advisory and is intended for reference purposes only. American Transmission Company owned and operated facility locations are approximate.  
Base Map Data Sources: ATC, WDNR, PSCW.