

# Monroe County-Council Creek Transmission Line

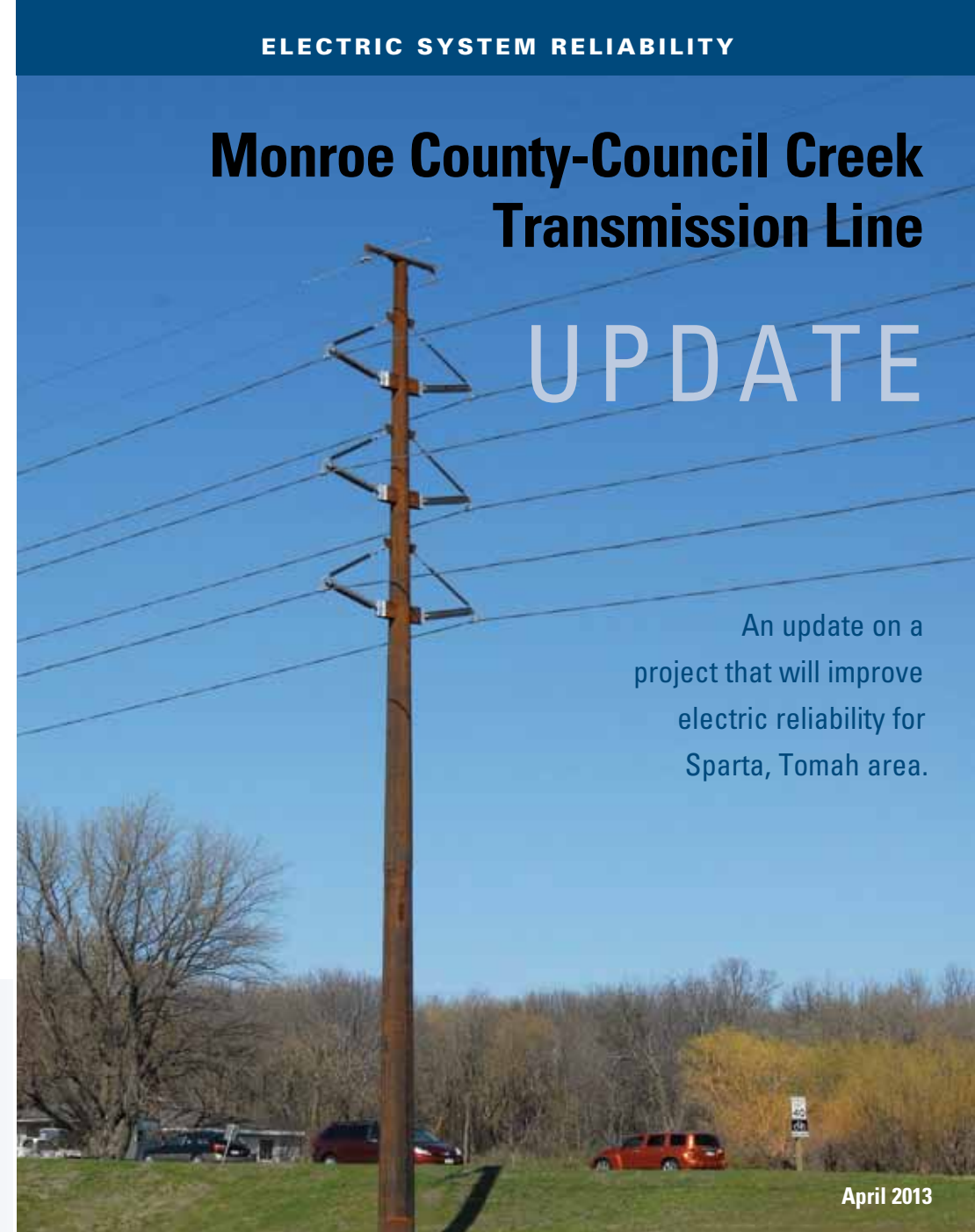
## UPDATE

An update on a project that will improve electric reliability for Sparta, Tomah area.

April 2013

Helping to **keep the lights on,** businesses running and communities strong®

[www.atc-projects.com](http://www.atc-projects.com)



### PROJECT SCHEDULE

Public open houses .....	Summer-fall 2010
Application submitted to PSC .....	July 2010
Regulatory review .....	2010-2012
PSC decision .....	Nov. 2012
Pre-construction open house .....	Late 2013
Begin construction.....	2014
In-service date .....	Mid-2015

### Project at a glance

**Communities affected:** City of Sparta, Town of Angelo, Fort McCoy Military Reservation, Town of Adrian, Town of Tomah, City of Tomah

**Line length:** Approximately 17 miles

**Pole height:** Typically 75 feet

**Right-of-way width:** Typically 60 feet

**Voltage:** 161-kV and 69-kV

**PSC-approved cost:** \$48 million

**End points:** Monroe County Substation in Sparta and Council Creek Substation near Tomah

**PSC Docket ID:** 137-CE-158 (website: <http://psc.wi.gov>)



P.O. Box 47  
Waukesha, WI 53187-0047

#### Who we are

Everything we do at ATC is designed to ensure the reliable operation of the electric transmission system. ATC is a Wisconsin-based utility that owns, operates, builds and maintains the high-voltage electric transmission system serving portions of the Upper Midwest.

#### Questions or comments?

Please direct your questions to Charles Gonzales at 608-877-3644 or [cgonzales@atcllc.com](mailto:cgonzales@atcllc.com).

Visit [www.atc-projects.com](http://www.atc-projects.com) for up-to-date project information.



ATC is a proud participant in Wisconsin's Green Tier program.

# Improvements to Sparta, Tomah area transmission system on the way

*Project includes new substation, rebuilding and adding a circuit to an existing transmission line*

American Transmission Co. in November 2012 received approval from the Public Service Commission of Wisconsin to rebuild and upgrade an existing electric transmission line that connects the Monroe County Substation near Sparta and the Council Creek Substation near Tomah. A new substation will also be built as part of the project.

**ATC will host a pre-construction open house in late 2013 to answer questions from landowners about what to expect during construction of the project.**

The current transmission system that serves the area is aging and susceptible to overloads and severe low voltages. Rebuilding the 69-kilovolt line and adding a new 161-kV line will help strengthen electric reliability for the area. The new line also will provide economic savings by reducing line losses and increasing access to lower cost power.

## Updated timeline

ATC anticipates beginning pre-construction vegetation management activities in early 2014. We will host a pre-construction open house in late 2013 to answer questions from landowners about what to expect during construction of the project. The project is anticipated to be in service in mid-2015.

## Construction

Work on the 17-mile line, primarily along Highway 16, will involve replacing poles and wires on the existing 69-kV transmission line, adding a 161-kV circuit to the new steel poles



*Weathered-steel poles will be used along most of the route.*

and building the new Timberwolf Substation approximately one-half mile south of Interstate 90 along Highway 131.

## ATC securing easement agreements

ATC and Dairyland Power Cooperative will co-own the transmission line. ATC and DPC have existing easement agreements with landowners along the route; ATC plans to secure new easements with landowners prior to constructing the project. ATC's real estate contractor, Steigerwaldt Land Services, Inc., began contacting landowners to initiate the easement negotiation process.

