

EXISTING TRANSMISSION FACILITIES

- ▲ Substation/SW Yard
- 69 kV Single Circuit
- 138 kV Single Circuit
- 345 kV Single Circuit
- Double Circuit
- Underground

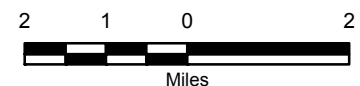


PROPOSED TRANSMISSION FACILITIES

- Beltline - Segments A, B, H, O
- Rockdale Southern-Western Segments N, G, E2
- Albion Connector - Segment Q
- US14-Beltline Connector Segments L, K2, F, F
- US14-Verona Connector Segments M, F

- Trail
- Railroad
- City or Village
- Town Boundary

Base Map Data Sources: ATC, WDNr, PSCW, WDOT, Dane County LIO, NRCS.



PROPOSED PROJECT

ROCKDALE - WEST MIDDLETON TRANSMISSION LINE PROJECT

AUGUST 2008

The information presented in this map document is advisory and is intended for reference purposes only. American Transmission Company owned and operated facility locations are approximate.